

MOBILE NETWORKS COVERAGE AUDIT KINGDOM OF BAHRAIN – 2022

Version	Date	Author	Changelog
1	27/01/2022	Olivier GHIBAUDO	Creation of document



TABLE OF CONTENTS

1. EXECUTIVE SUMMARY	3
2. OBJECTIVE	4
3. METHODOLOGY	5
3.1.1. Administrative Divisions	6
3.1.2. Drive-test routes.....	7
3.1.3. Equipment	8
3.1.4. Coverage Rate	9
3.1.5. Additional Elements	10
4. RESULTS.....	11
4.1. Population coverage for voice and data	11
4.1.1. Population Coverage for Voice service.....	11
4.1.2. Population Coverage for Data service: 5G user	11
4.1.3. Accuracy of the MNOs Coverage Maps for Data 5G.....	12
4.1.4. Population Coverage for Data service: 4G user	12
4.2. Technology Distribution	14
4.2.1. 5G Handset.....	14
4.2.2. 4G Handset.....	15
4.3. Audit of Operators' Coverage Maps	16
4.3.1. Batelco – Voice Coverage	17
4.3.2. Batelco 5G – Data Coverage for a 5G user	18
4.3.3. Batelco 4G – Data Coverage for a LTE user	19
4.3.4. STC Bahrain – Voice Coverage.....	21
4.3.5. STC Bahrain 5G – Data Coverage for a 5G user	22
4.3.6. STC Bahrain 4G – Data Coverage for a LTE user	23
4.3.7. Zain – Voice Coverage.....	25
4.3.8. Zain 5G – Data Coverage for a 5G user	26
4.3.9. Zain 4G – Data Coverage for a LTE user	27
4.3.10. Idle Coverage – Signal Strength Distribution.....	28

This study is published in accordance with Articles 3(b)(1), 3(c)(2), 3(c)(4) and Article 54 of the Telecommunications Law promulgated by Legislative Decree No. (48) of 2002. The purpose of the study is to evaluate and benchmark Quality Levels offered by Mobile Network Operators, Batelco, STC Bahrain and Zain, in the Kingdom of Bahrain. The independent study was conducted with an objective End-user perspective by Cabinet Directique and does not represent any views of the Authority.

This study is the property of the Telecommunications Regulatory Authority (the "Authority" or "TRA"). Any effort to use this Study for any purpose is permitted only upon the Authority's written consent.

This document contains information and statistics that have been obtained from sources believed to be reliable in regard to the subject matter covered.

This document does not however constitute commercial, legal or other advice however so described. TRA and Directique exclude any warranty and, or liability, expressed or implied, as to the quality, completeness, adequacy and accuracy of the information, statements and statistics contained within this document. This document is a study and it is a non-binding document. It has no legal effect. This document does not represent an official position of the TRA, but is intended to stimulate debate in the part of stakeholders and public. It does not prejudice the form or content of any future proposal by the TRA.

TRA and Directique reserve the right to change and update the information, statements and statistics provided in this document at its discretion and without prior notification and assumes no obligation to update the document on the basis of suggestions, comments and/or queries made by third parties.

TRA and Directique assume no responsibility for any consequences that may arise in the absence of such changes and/or updates.

To the fullest extent permitted by law, neither TRA or any of its officers however so described or agents nor Directique will assume responsibility and/or liability for any loss or damage, including losses or damages such as loss of goodwill, income, profit or opportunity, or any other claim of third parties, arising from or related to the use of the content of this document.

This publication or parts thereof may only be reproduced or copied with the prior written permission from TRA.

1. EXECUTIVE SUMMARY

Mobile Network Operators are under a coverage obligation as a condition of their Individual Mobile Telecommunications license (IMTL), and it is the responsibility of TRA to verify and validate that each operator is meeting its obligation.

The provisions of the Individual Mobile Telecommunications Licence that was issued on 19 September 2013 require Licensees to provide a mobile telecommunication network that is capable of providing mobile telecommunication services with a nationwide coverage of at least 99% of the population in the Kingdom of Bahrain by no later than nine months from the effective date of such license.

The license obligation defines population coverage for each Mobile Operator's own telecommunication network. The coverage as perceived by the customers is independent of the deployed technology; coverage measurements have been made with handsets in following network mode:

For voice:

- a set of smartphones in Auto connect mode

For data:

- a set of smartphones with 5G enabled
- a set of smartphones with 4G enabled
- a set of smartphones with 3G enabled for Batelco and STC only

It is important to point out that ZAIN has stopped providing 3G services to consumers, so no measurement done in 3G for ZAIN.

Also, some areas were not accessible to the audit team, being either private land or reserved for government, which explains why the maps do not show any measurements in those areas of the Kingdom. However those areas are not open to general public.

Finally this annual audit has taking into consideration that new areas that have been opened in the 4 governorates:

- **Muharraq**- East Hidd City, Bahrain Investment Gateway, Dilmunia Island & Busaiteen Seafront
- **Capital**- Water Garden City
- **Northern**- Nurana Island & Northern City
- **Southern**- Khalifa Town, Almahadeer City & Al Sahel Resort

With this in mind, results obtained are very good and show that there is no significant coverage difference from one operator to the other. All operators meet their coverage obligations.

Directique was also required to audit Mobile Network Operators coverage prediction maps with the actual observed coverage.

Results show that the Operators' maps are fully reliable.

2. OBJECTIVE

The objective of this audit was to:

- Measure the outdoor coverage of the 3 Mobile Operators; Batelco, STC Bahrain and Zain (except on 3G), via an accessibility test
- Establish for each operator a direct correlation between the number of households covered and the percentage of the population, resulting directly from such coverage
- Validate the coverage maps of each Mobile Operator against the outdoor coverage observed during the audit.

3. METHODOLOGY

The audit was conducted from the 30th of October 2022 to the 18th of January 2023 across the Kingdom's 4 Governorates for Voice, 3G (Batelco and STC only), 4G and 5G coverage.

Audit results have been weighted with the population percentage living in each Governorate¹. The result tables present the detailed coverage per Governorate as measured for each operator.

The coverage has been audited using tools which are fully representative of how a subscriber would access a mobile service – the audit therefore is fully representative of the subscriber experience, and completed with signal levels.

As 5G networks are non stand-alone network but closely linked to 4G network, 5G network signal strength cannot be used as a reliable indicator, and so will not be presented.

Measurements have been performed with the following methodology:

- **Voice:** a set of smartphones in 2G/3G/4G auto connect mode, running accessibility voice calls with **Nemo Drive Test Tool**.

The accessibility test for voice service consist in placing a call and checking if signalling is ok.

- **3G, 4G and 5G Data:** data accessibility tests (HTTP DL) for 3G, 4G and 5G network with **Nemo Drive Test Tool**:
 - o 1 set in 5G auto mode to represent 5G users,
 - o 1 set in 4G locked mode, to represent the LTE users,
 - o 1 set in 3G locked mode, to represent the UMTS users.

The accessibility test for 3G and 4G data service consist of sending and receiving a 512 byte file with HTTP protocol.

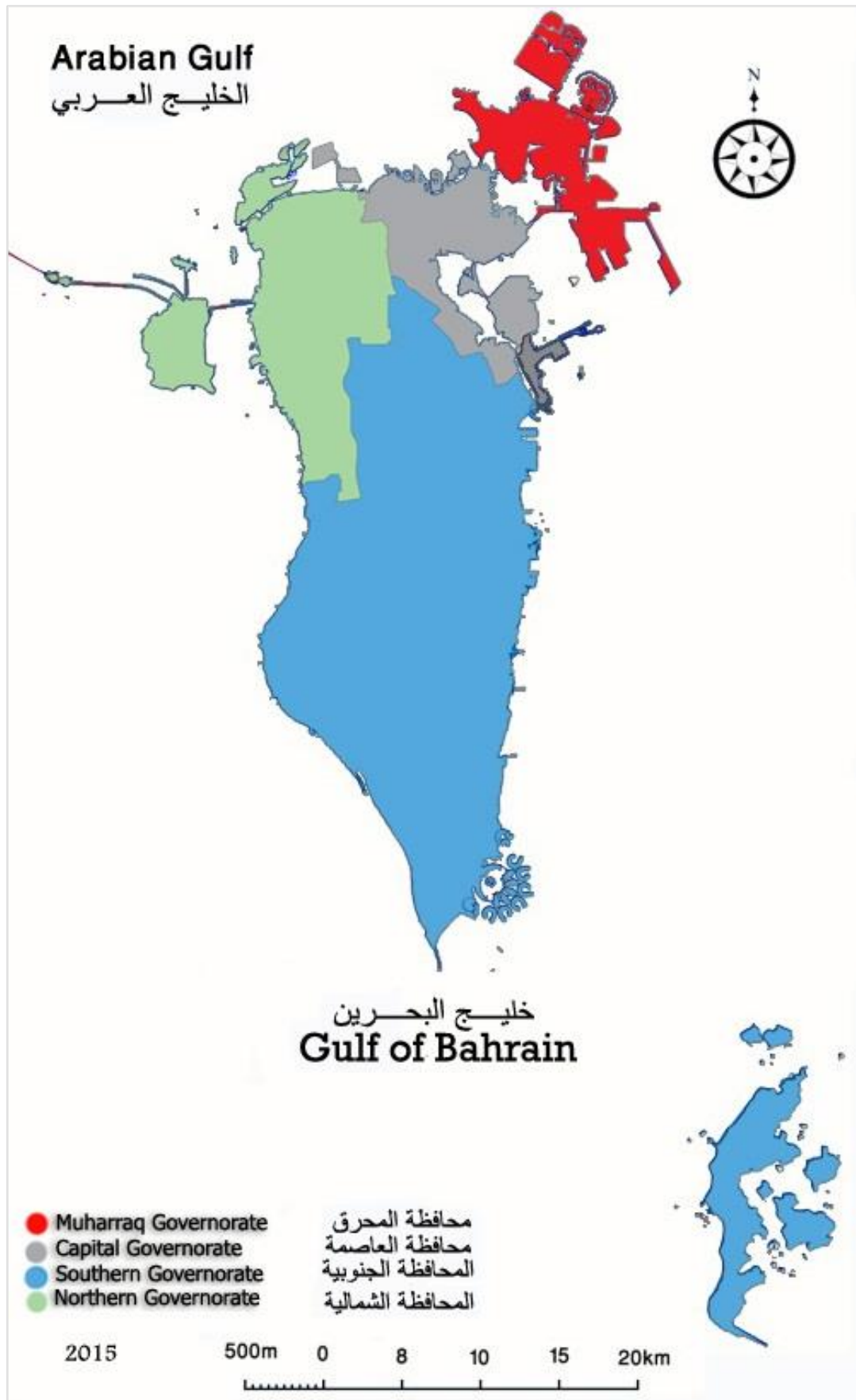
For 5G, the accessibility test consists of requesting to download a very large file (100GB) and stopping the transfer after 30 seconds.

A set is 3 smartphones, one per Operator, except for 3G where only 2 smartphones have been used for Batelco and STC only.

The test vehicle was equipped with the handsets and the software and followed a pre-determined route which was selected to ensure that it covered the 4 Governorates of the Kingdom. Tests were automatically software conducted.

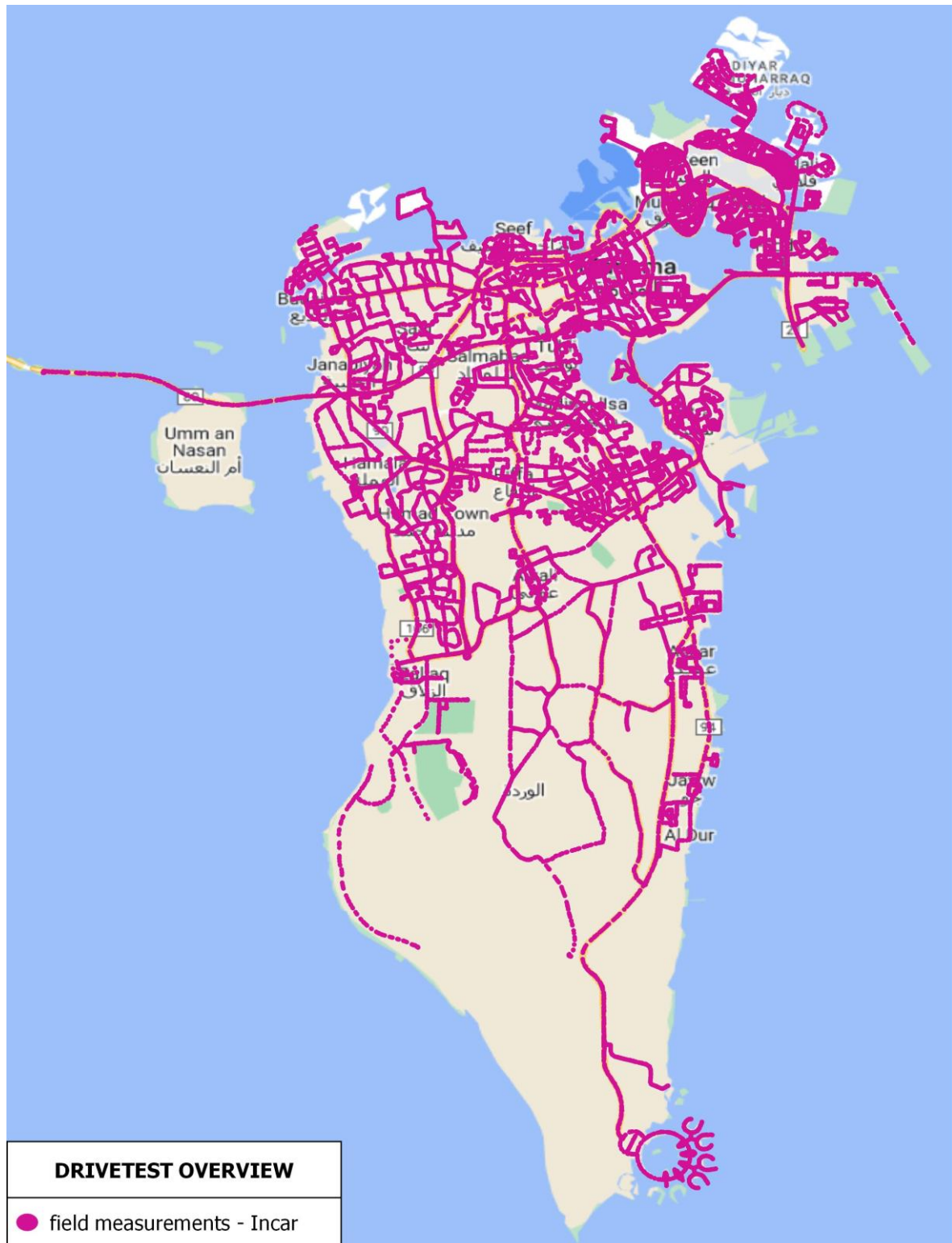
¹ Population data based on CIO latest census (2018)

3.1.1. ADMINISTRATIVE DIVISIONS



3.1.2. DRIVE-TEST ROUTES

Routes followed by the vehicle performing measurements.



3.1.3. EQUIPMENT

Audit measurements were performed using standard mobile phones.

Data coverage

Device: Samsung Galaxy S9 for 3G and 4G, Huawei P40 for 5G

Methodology: In order to have a representative experience of 3 types of services, all devices were set in the following technology mode:

- For 5G, one set of smartphones where network mode was **5G Auto Mode**
- For 4G, one set of smartphones where network mode was: **4G Locked**
- For 3G, one set of smartphones where network mode was: **3G Locked**.

Voice coverage:

Device: Samsung Galaxy S9.

Methodology: 1 mobile phone was used for each network, in 2G/3G/4G auto connect, in order to evaluate coverage along the drive, regardless the available technology. The same setup was repeated to cover all 3 mobile networks, i.e. Batelco, STC Bahrain and Zain.





Rooftop box and incar control station

Mobile phones were positioned vertically on a stable, specifically adapted base, to provide the best possible radio conditions. Electrical supply of each mobile phone was continuously guaranteed to ensure autonomy of the device and optimal radio conditions.

The platform was connected to computer based software recording test results. The set-up was completed with a GPS receiver, which recorded the exact location of each test.

3.1.4. COVERAGE RATE

The geographical coverage rate for each technology is computed using the number of successful measurements on this technology by the total number of measurements.

Accessibility														
Result	OK	OK	OK	NOK	OK	NOK	OK	NOK	OK	NOK	OK	NOK	OK	NOK

$$\text{Coverage rate} = \frac{\sum \text{OK}}{\sum \text{OK} + \text{NOK}}$$

Data coverage is calculated the same way, using the successful HTTP 512 byte tests or the successful 5G Download request among the total sample.

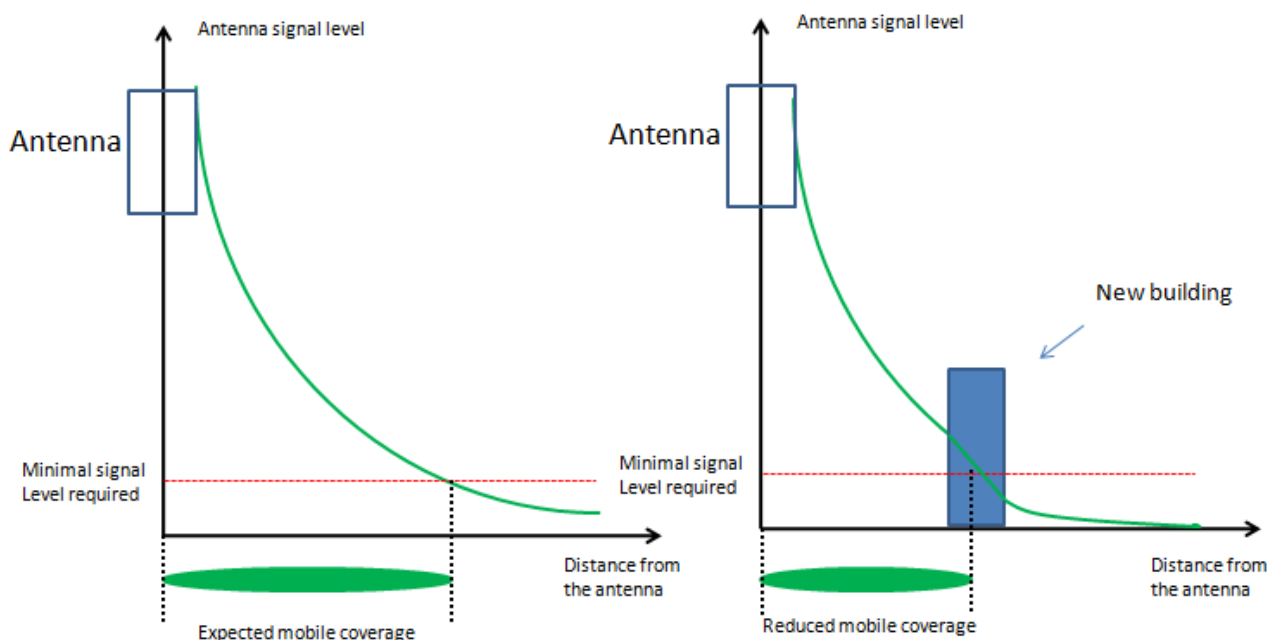
Population coverage is then calculated by weighting these results with the population percentage living in each Governorate, using latest available Central Informatics Organisation (CIO) census statistics for the Kingdom.

3.1.5. ADDITIONAL ELEMENTS

It is important to understand that outdoor coverage is usually better than indoor coverage, because the base station providing the mobile signal is usually located outside, typically on a building roof or a telecommunications mast.

The mobile signal is attenuated when it penetrates a building structure, affected by the thickness of concrete wall and metallic elements used in the construction, thus resulting in lower signal strength inside the building.

In some instances such as malls and large shopping centres, hotels and airports, Mobile Operators implement additional indoor base stations to ensure adequate coverage, however the assessment of indoor coverage was not in the scope of this audit.



Coverage evolution following a new construction

Readers shall understand that mobile coverage can also vary with the evolution of the landscape, the diagram above showing the impact of a new building in a previously fully covered area, and illustrate the need for Mobile Operators to continuously monitor the coverage of their mobile network and take action when necessary to maintain the appropriate coverage level.

4. RESULTS

4.1. POPULATION COVERAGE FOR VOICE AND DATA

4.1.1. POPULATION COVERAGE FOR VOICE SERVICE

% of population with a handset with access to voice

Voice Coverage Population 2022

Governorate	% Pop	BATELCO		STC		ZAIN		GLOBAL	
		Nb	Coverage	Nb	Coverage	Nb	Coverage	Nb	Coverage
Capital	37%	2502	100.0%	2491	100.0%	2485	100.0%	7478	100.0%
Northern	24%	1578	100.0%	1567	100.0%	1568	100.0%	4713	100.0%
Muharraaq	18%	1940	100.0%	1927	100.0%	1929	99.9%	5796	100.0%
Southern	21%	1962	100.0%	1956	100.0%	1939	100.0%	5857	100.0%
Total		7 982	100.0%	7 941	100.0%	7 921	100.0%	23 844	100.0%
Statistical accuracy on Coverage		+/-0.0%		+/-0.0%		+/-0.0%		+/-0.0%	

Rate represents the % of successful voice accessibility calls.

4.1.2. POPULATION COVERAGE FOR DATA SERVICE: 5G USER

% of population with a 5G handset with access to 5G data

% of 5G Data Population Coverage 2022

Governorate	% Pop	BATELCO		STC		ZAIN		GLOBAL	
		Nb	Coverage	Nb	Coverage	Nb	Coverage	Nb	Coverage
Capital	37%	1796	100.00%	1790	100.00%	1713	90.43%	5299	96.81%
Northern	24%	1173	100.00%	1176	100.00%	1169	85.46%	3518	95.15%
Muharraaq	18%	1631	100.00%	1631	100.00%	1556	97.69%	4818	99.23%
Southern	21%	1459	100.00%	1456	100.00%	1455	88.87%	4370	96.29%
Total		6 059	100.0%	6 053	100.0%	5 893	90.2%	18 005	96.7%
Statistical accuracy on Coverage		+/-0.0%		+/-0.0%		+/-0.8%		+/-0.3%	

Rate represents the % of successful 5G Data accessibility tests

Legend:

Governorate: Governorate name

Sample: Number of measurements

% Pop: Population percentage in the specific area

Coverage: Resulting computed population coverage

4.1.3. ACCURACY OF THE MNOs COVERAGE MAPS FOR DATA 5G

% of accuracy of the MNOs coverage maps provided for Data 5G and the measurement performed:

	BATELCO	STC	ZAIN
% of Accuracy of coverage map provided	100.00%	100.00%	100.00%

4.1.4. POPULATION COVERAGE FOR DATA SERVICE: 4G USER

% of population with a LTE handset with access to 4G data

Governorate	% Pop	BATELCO		STC		ZAIN		GLOBAL	
		Nb	Coverage	Nb	Coverage	Nb	Coverage	Nb	Coverage
Capital	37%	2374	100.00%	2350	100.00%	2336	100.00%	7060	100.00%
Northern	24%	2037	100.00%	2011	100.00%	1982	100.00%	6030	100.00%
Muharraq	18%	3899	100.00%	3880	100.00%	3869	100.00%	11648	100.00%
Southern	21%	2256	100.00%	2265	100.00%	2237	100.00%	6758	100.00%
Total		10 566	100.0%	10 506	100.0%	10 424	100.0%	31 496	100.0%
Statistical accuracy on Coverage		+/-0.0%		+/-0.0%		+/-0.0%		+/-0.0%	

Rate represents the % of successful http data transfers.

Legend:

Governorate: Governorate name
% Pop: Population percentage in the specific area

Sample: Number of measurements
Coverage: Resulting computed population coverage

4.1.5. POPULATION COVERAGE FOR DATA SERVICE: 3G USER

% of population with a UMTS handset with access to 3G data

		BATELCO		STC		GLOBAL	
Governorate	% Pop	Nb	Coverage	Nb	Coverage	Nb	Coverage
Capital	37%	2317	100.00%	2300	100.00%	4617	100.00%
Northern	24%	1995	100.00%	2048	100.00%	4043	100.00%
Muharraq	18%	3852	100.00%	3828	100.00%	7680	100.00%
Southern	21%	2235	100.00%	2217	100.00%	4452	100.00%
Total		10 399	100.0%	10 393	100.0%	20 792	100.0%
Statistical accuracy on Coverage		+/-0.0%		+/-0.0%		+/-0.0%	

4.2. TECHNOLOGY DISTRIBUTION

Figures here below show the exact distribution of the data coverage measurements.

For 5G handset, first the rate of 5G successful download request is provided, as a location where the 5G download was NOK in a period time of 30 seconds, is considered as not 5G covered.

Then, graph showing the percentage of those successful 5G tests on each technology used by the mobile.

For 3G and 4G handset, first the rate of successful HTTP test is provided, as a location where the latency was NOK, is considered as not covered.

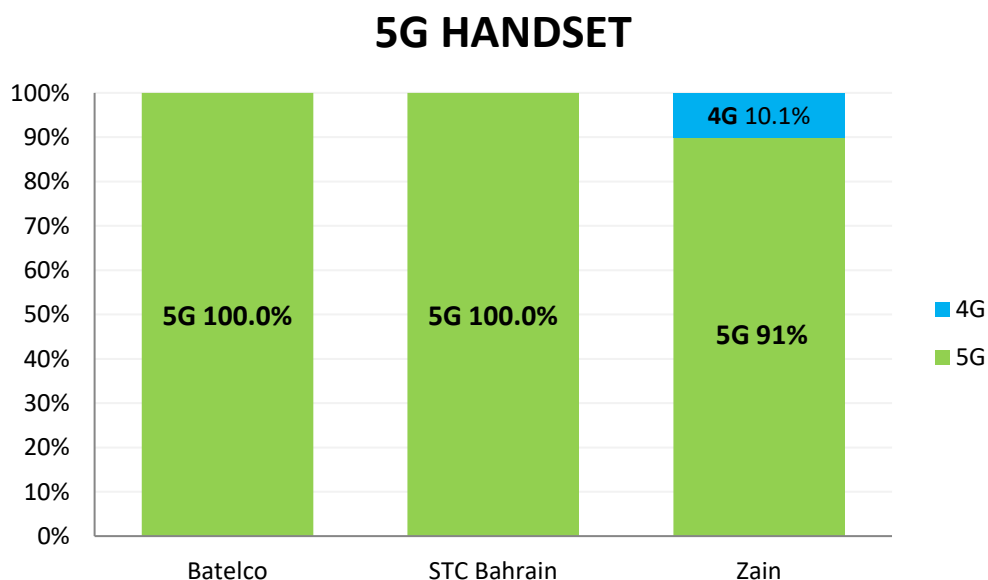
Then, graphs show the percentages of those successful tests on each technology used by the mobile.

4.2.1. 5G HANDSET

	BATELCO	STC	ZAIN
Rate of 5G successful download requests	100%	100%	91%

On technology:

5G	100%	100%	91%
4G	0%	0%	9 %

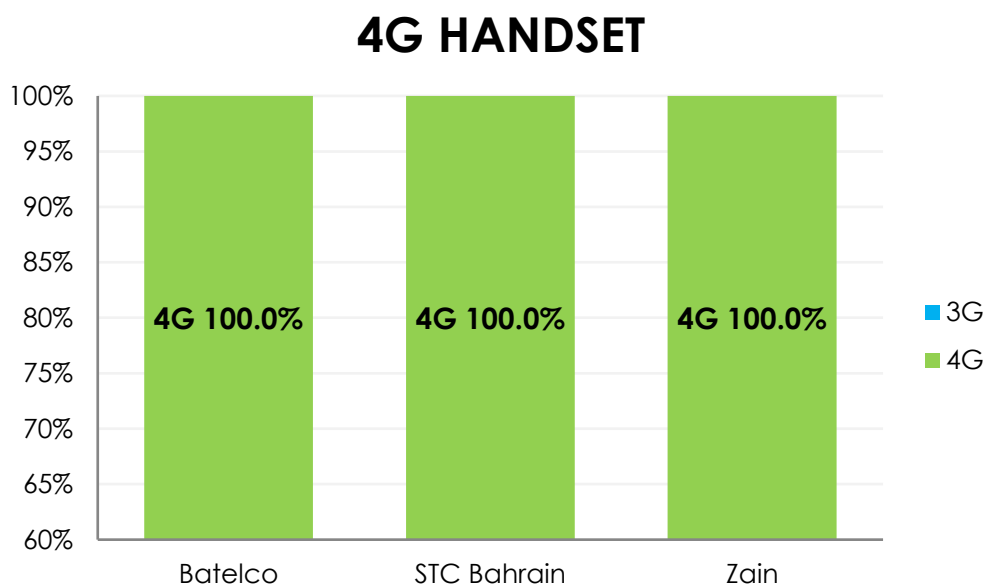


4.2.2. 4G HANDSET

	BATELCO	STC	ZAIN
Rate of successful HTTP tests	100%	100%	100%

On technology:

4G	100%	100%	100%
3G	0%	0%	0%

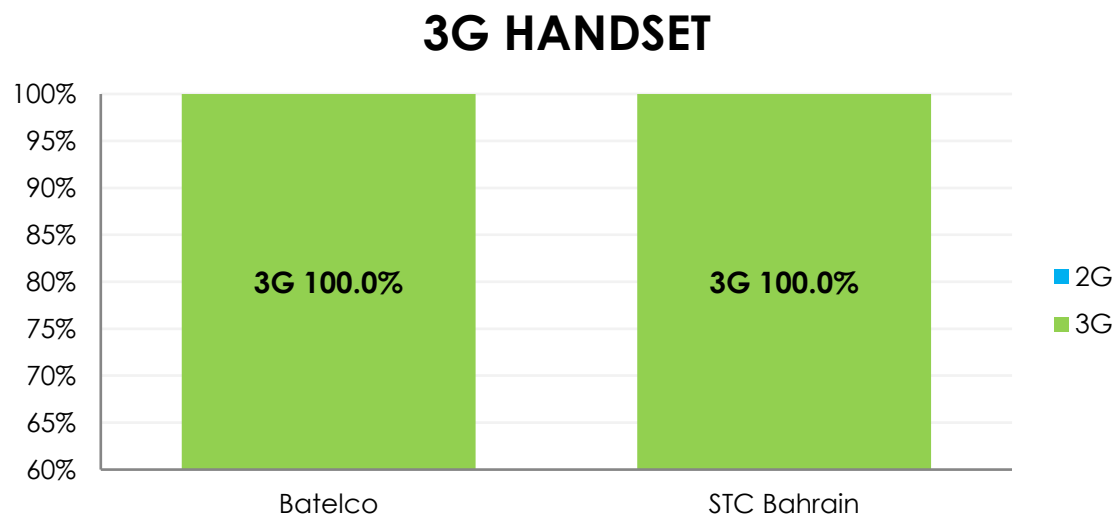


4.2.3. 3G HANDSET

	BATELCO	STC
Rate of successful HTTP tests	100%	100%

On technology:

3G	100%	100%
2G	0%	0%



4.3. AUDIT OF OPERATORS' COVERAGE MAPS

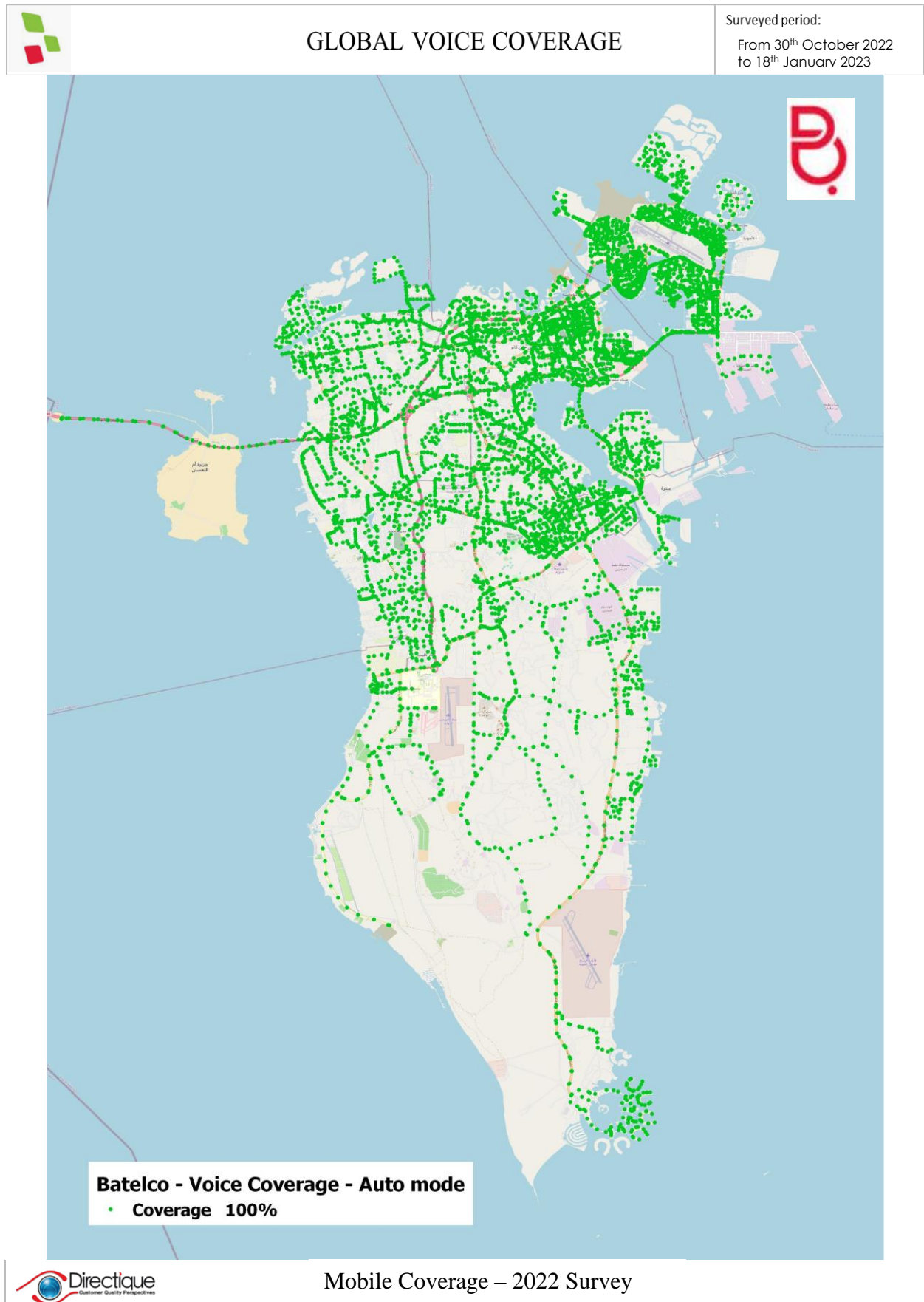
Another objective of this audit was to verify operator's coverage maps reliability. Maps have been provided by each operator at the beginning of this audit. The documents presented hereafter show each operator's coverage maps with a superimposed layer showing results of the coverage measurements performed by Directique, using the following colour code:

If the spot is **green**, the test was inside the coverage zone of the operator and accessibility to network was effective on the handset

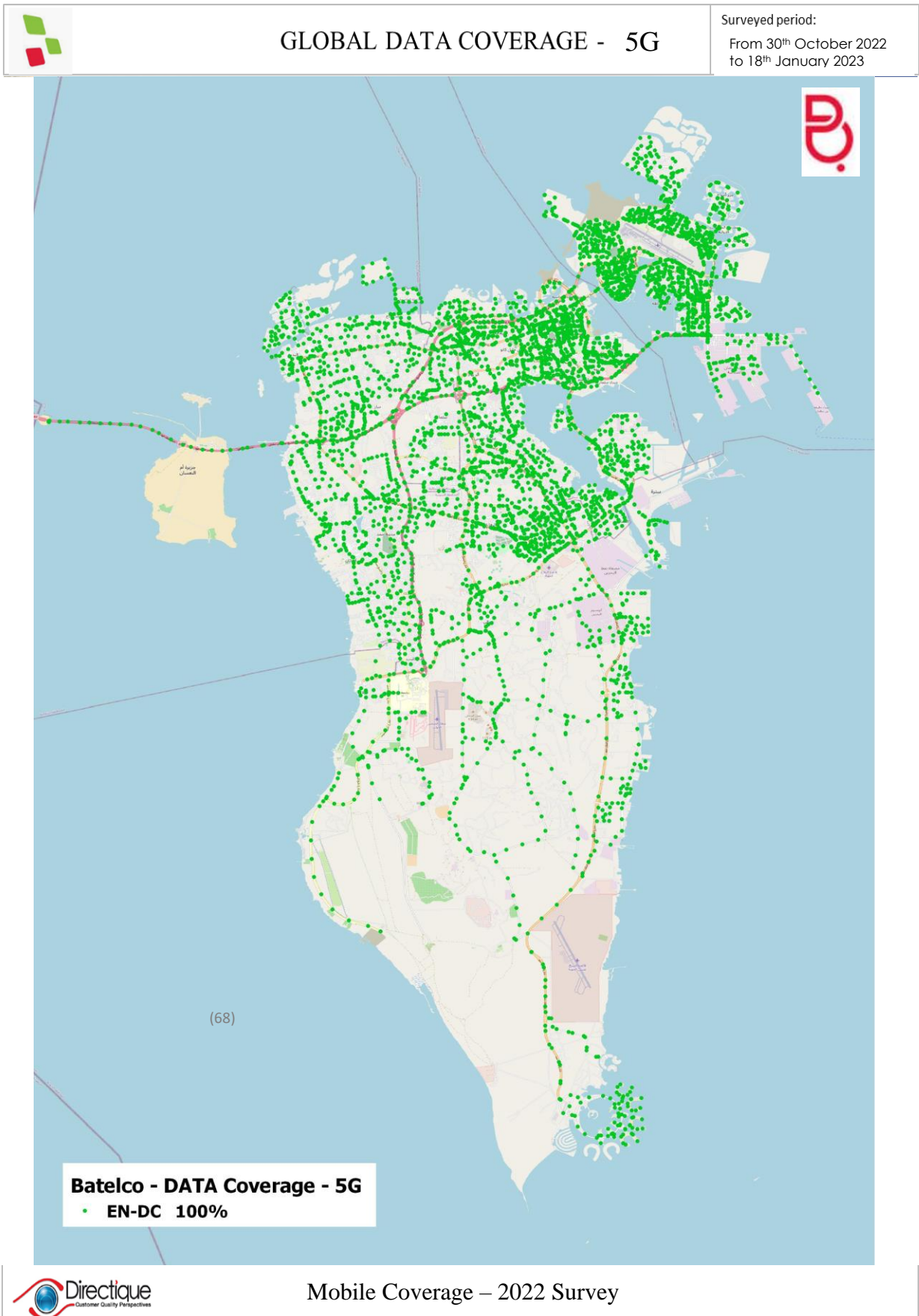
If the spot is **red**, the test was inside the coverage zone of the operator and accessibility to network was not effective on the handset

For data measurements, separate maps have been produced for both LTE and non-LTE users.

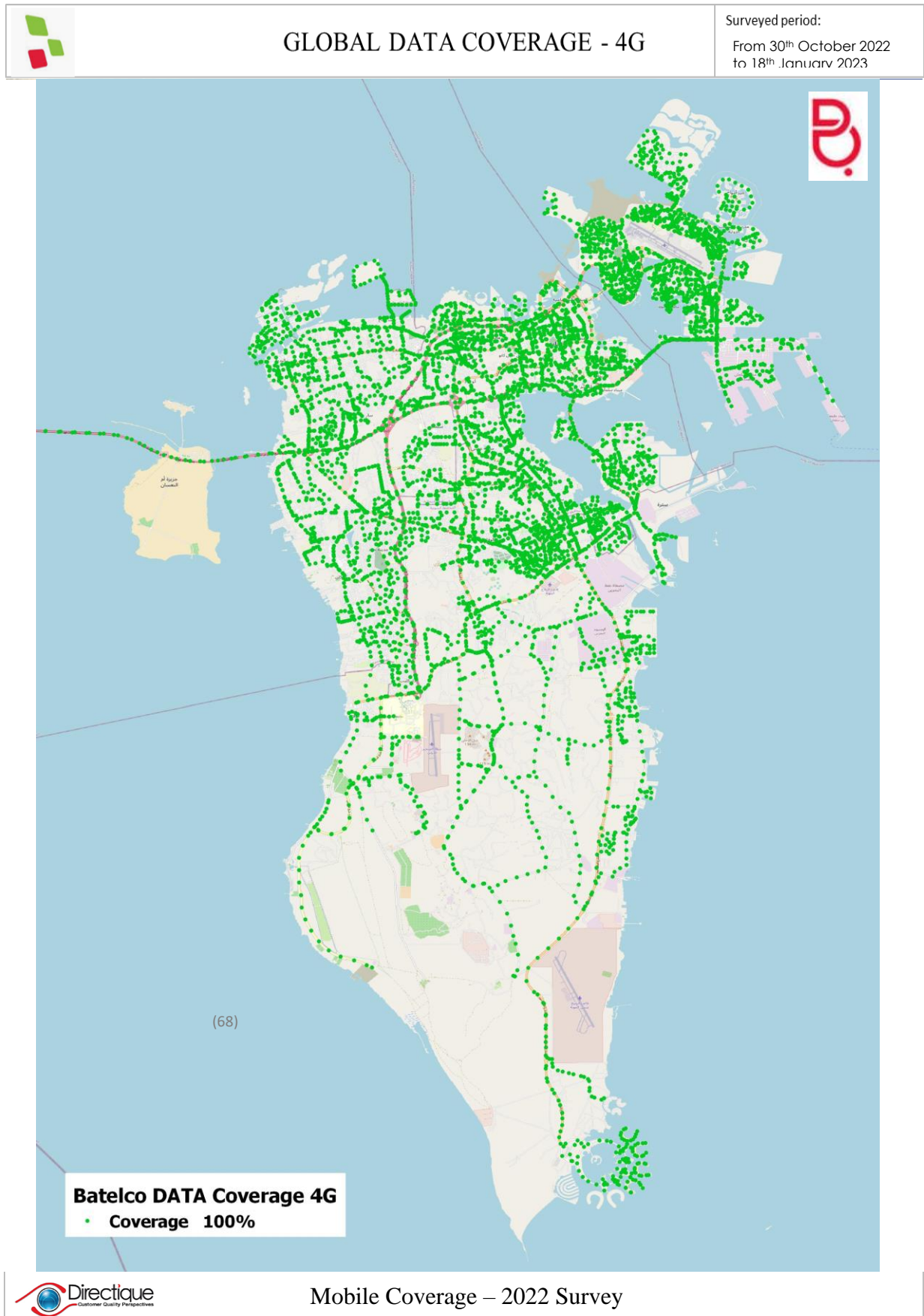
4.3.1. BATELCO – VOICE COVERAGE



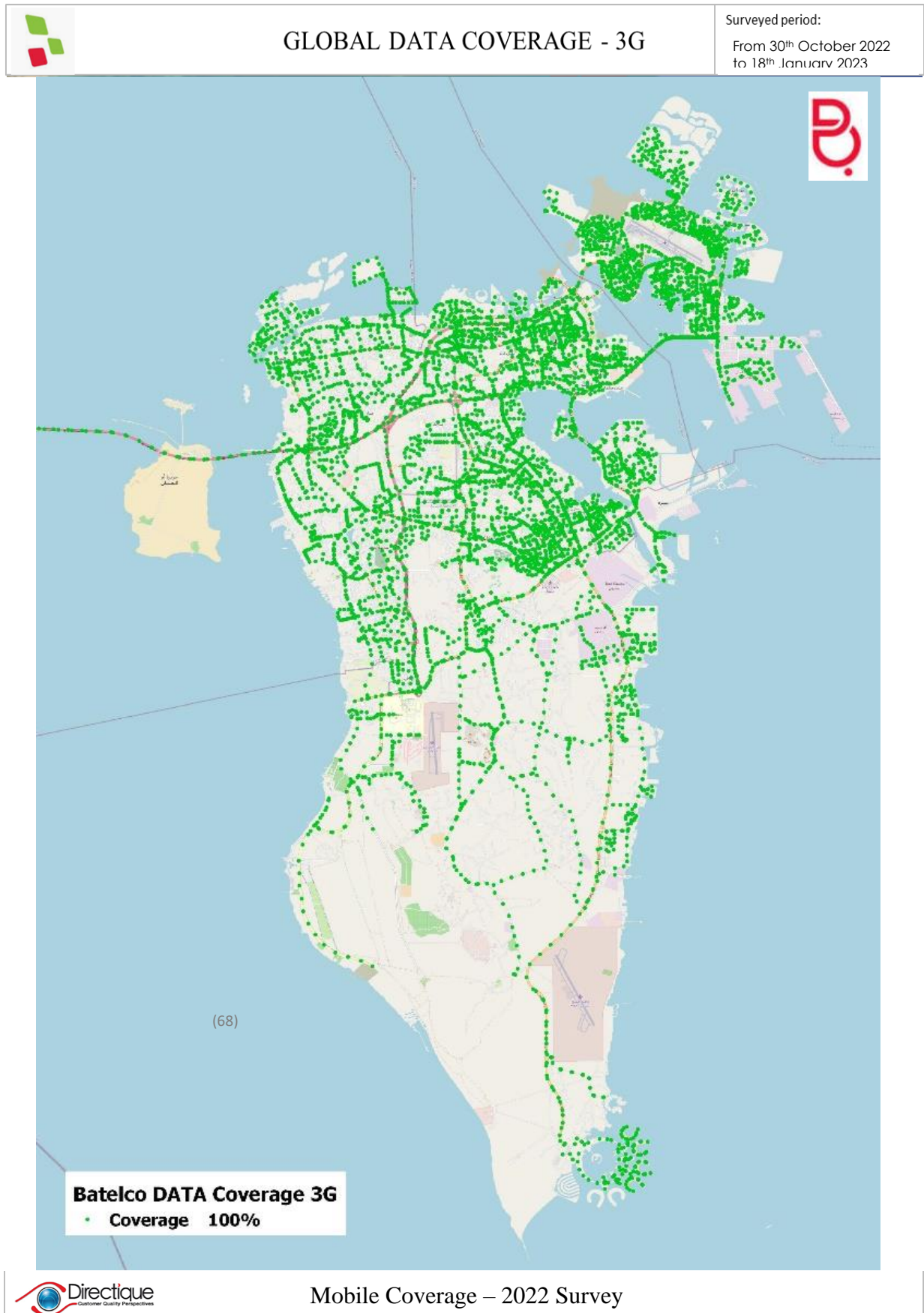
4.3.2. BATELCO 5G – DATA COVERAGE FOR A 5G USER



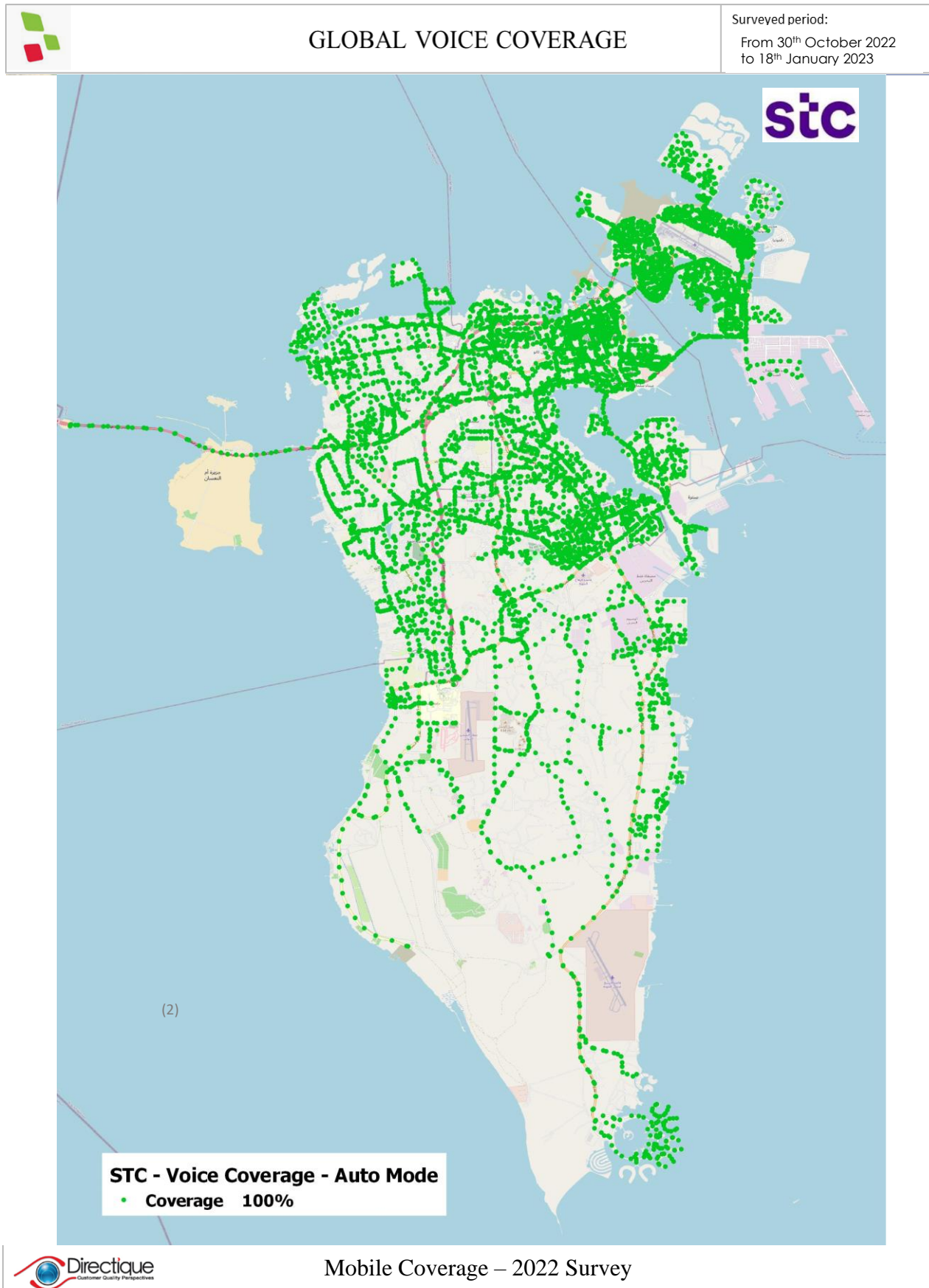
4.3.3. BATELCO 4G – DATA COVERAGE FOR A LTE USER



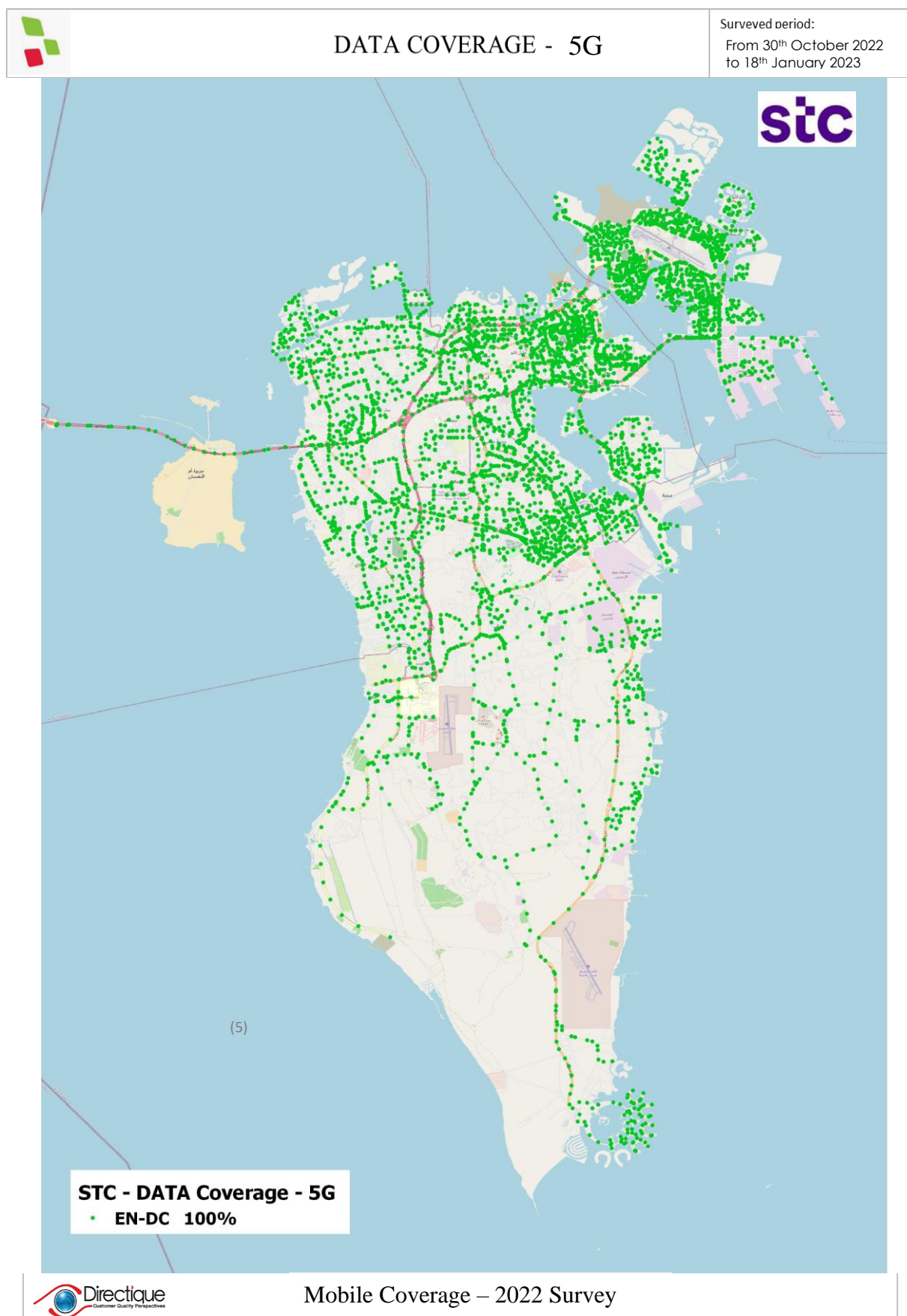
4.3.4. BATELCO 3G – DATA COVERAGE FOR A UMTS USER



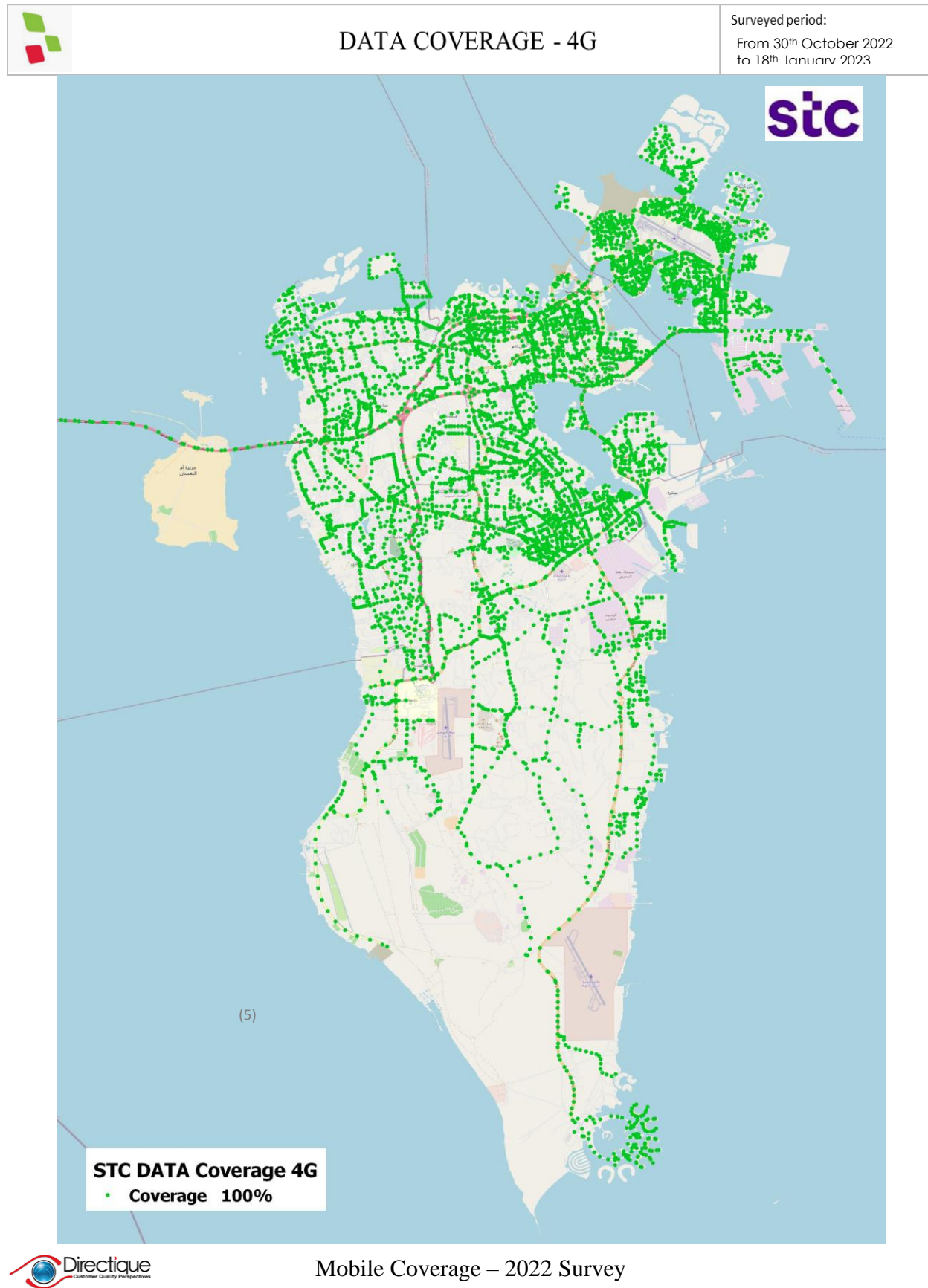
4.3.5. STC BAHRAIN – VOICE COVERAGE



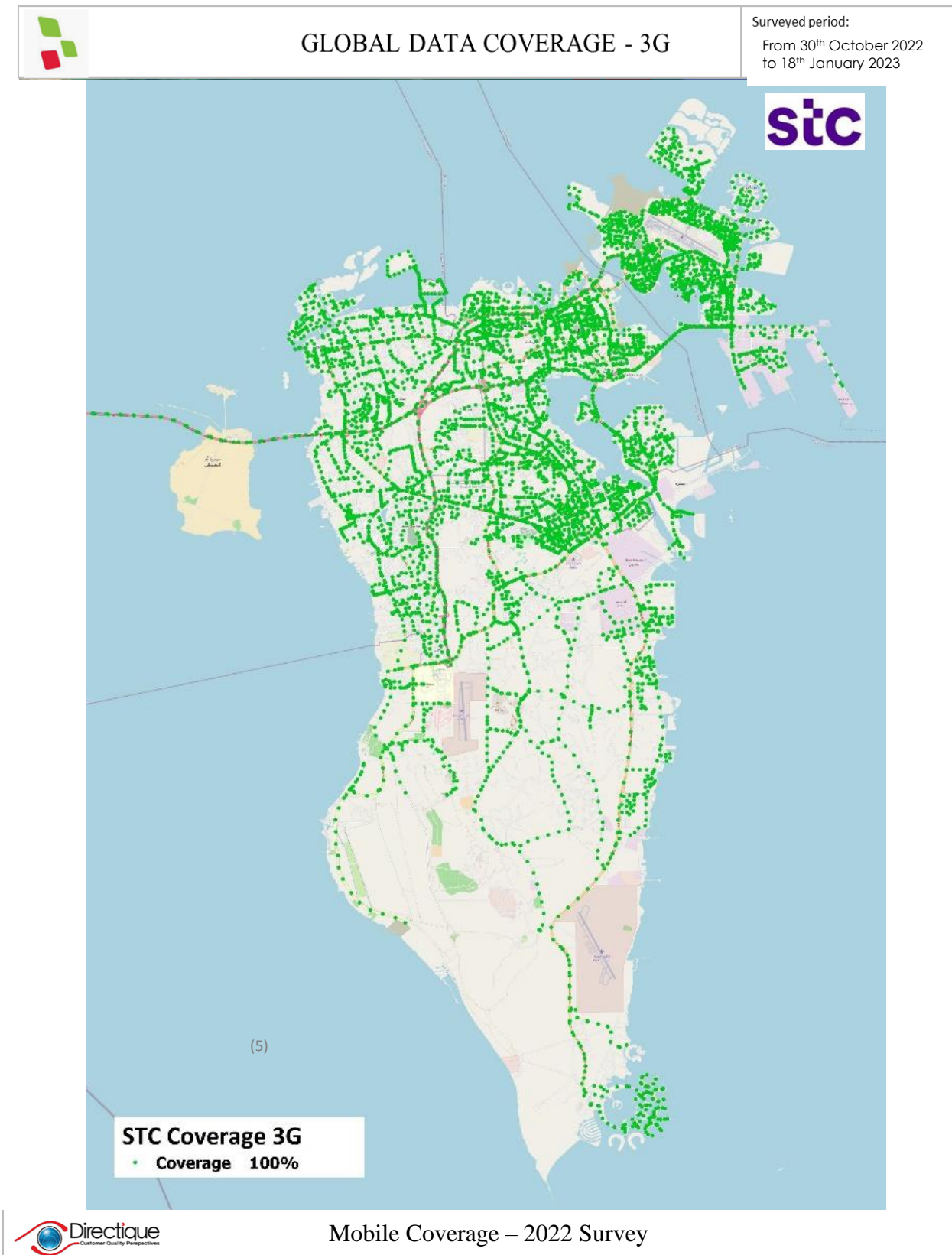
4.3.6. STC BAHRAIN 5G – DATA COVERAGE FOR A 5G USER



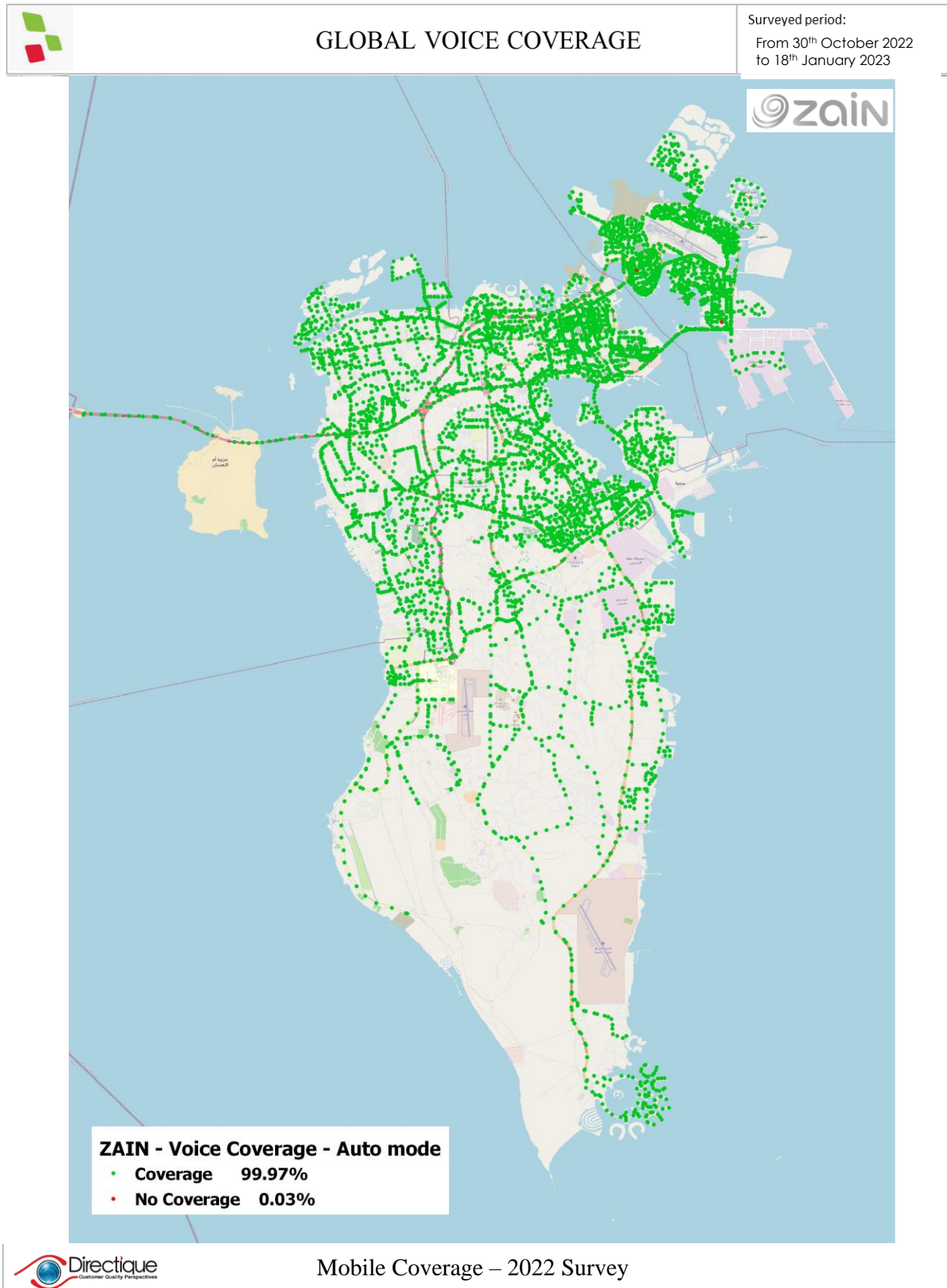
4.3.7. STC BAHRAIN 4G – DATA COVERAGE FOR A LTE USER



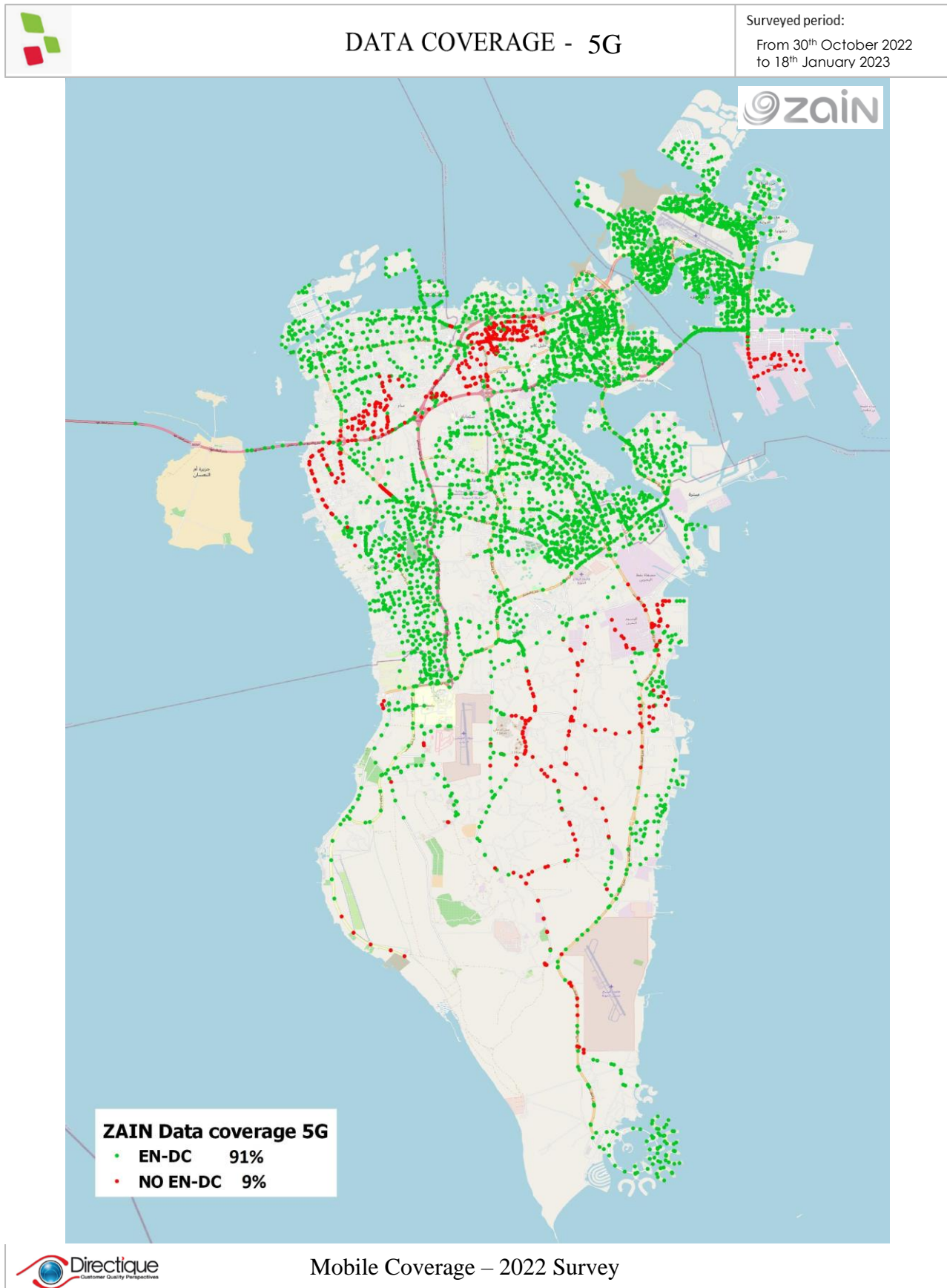
4.3.8. STC BAHRAIN 4G – DATA COVERAGE FOR A UMTS USER



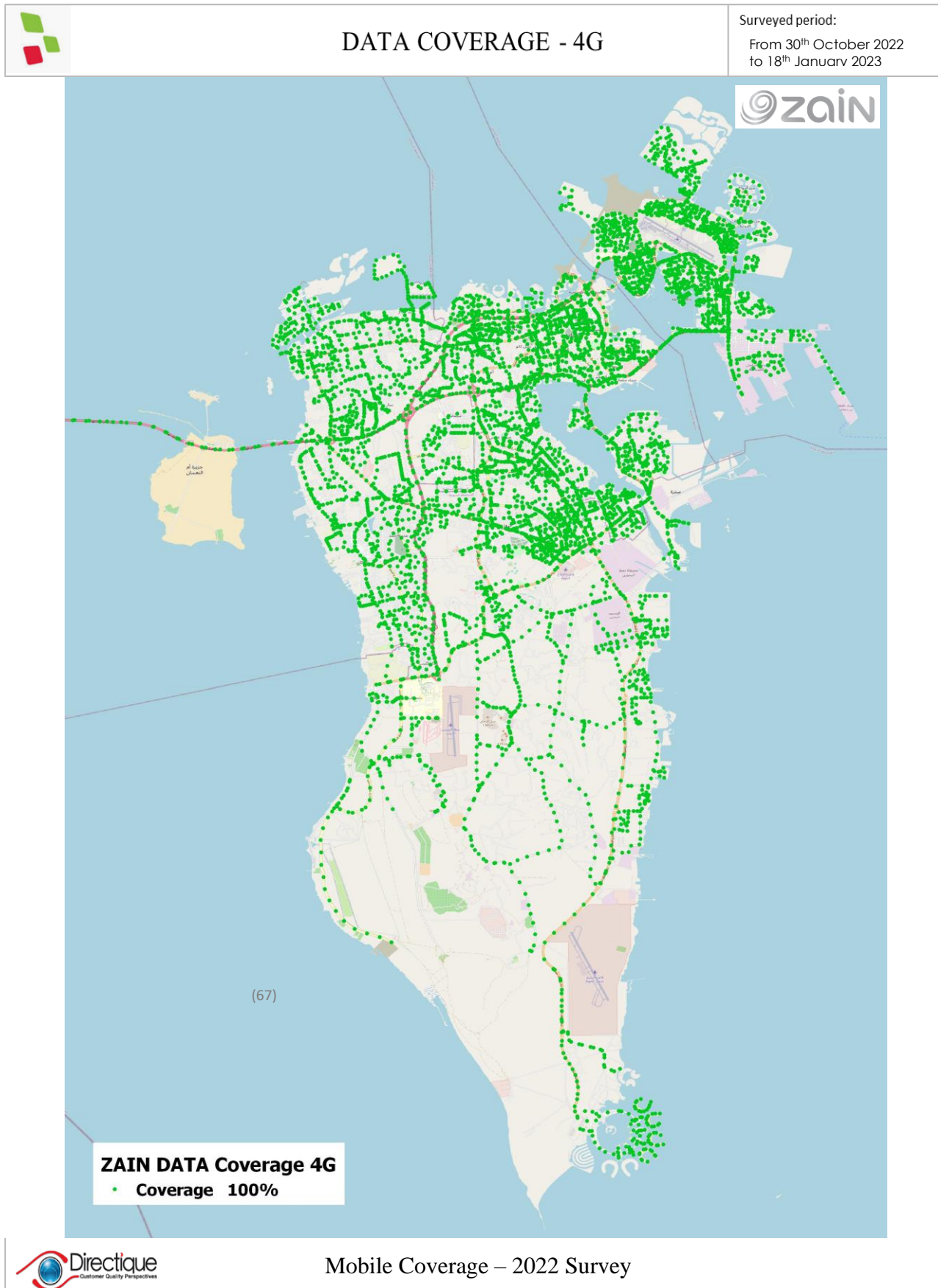
4.3.9. ZAIN – VOICE COVERAGE



4.3.10. ZAIN 5G – DATA COVERAGE FOR A 5G USER



4.3.11. ZAIN 4G – DATA COVERAGE FOR A LTE USER



4.3.12. IDLE COVERAGE – SIGNAL STRENGTH DISTRIBUTION

The following results have been calculated using signal strength on the handset while in IDLE, i.e. between accessibility calls.

Batelco - Signal strength distribution (IDLE mode):

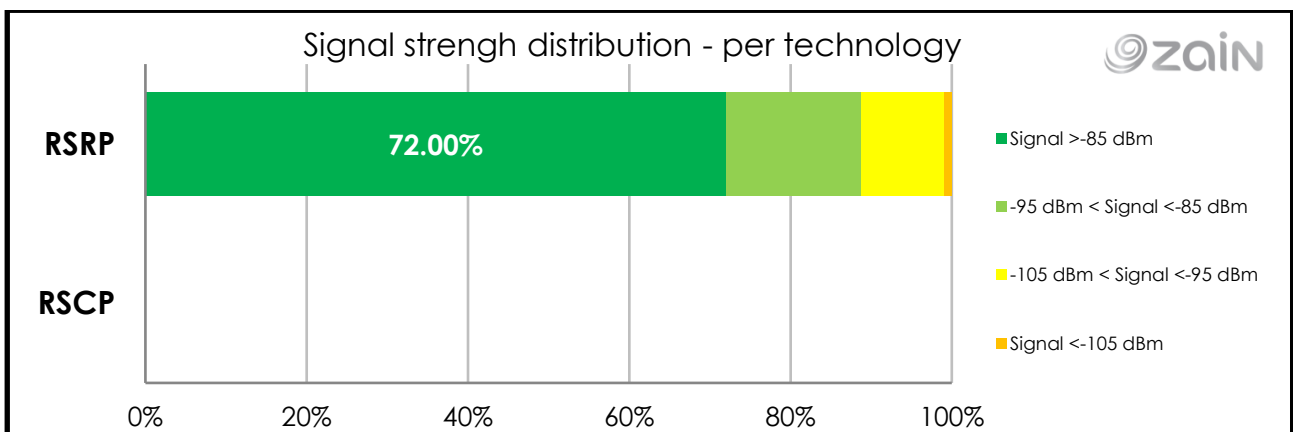
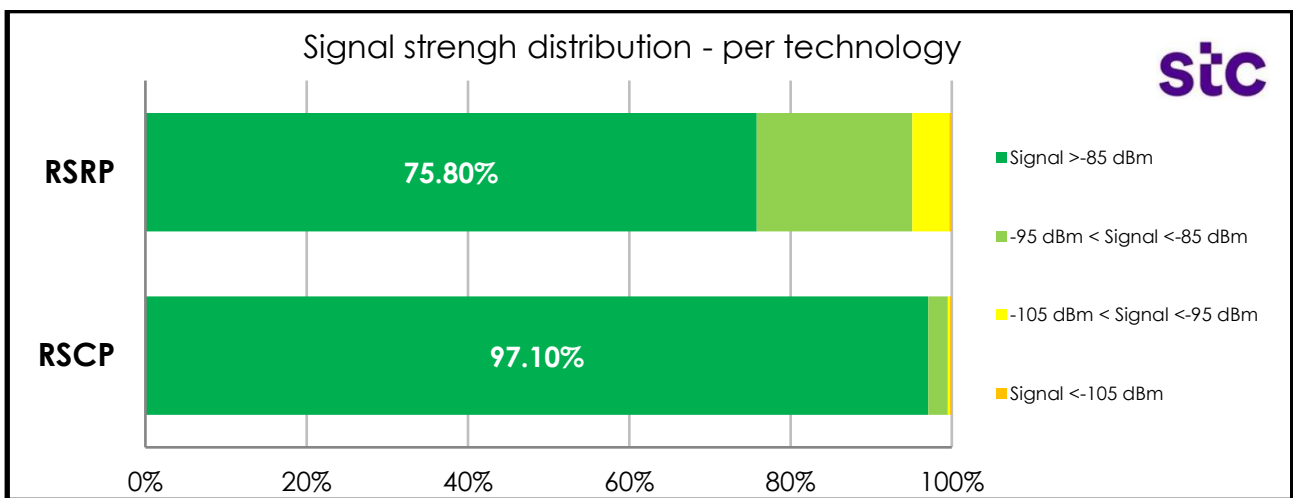
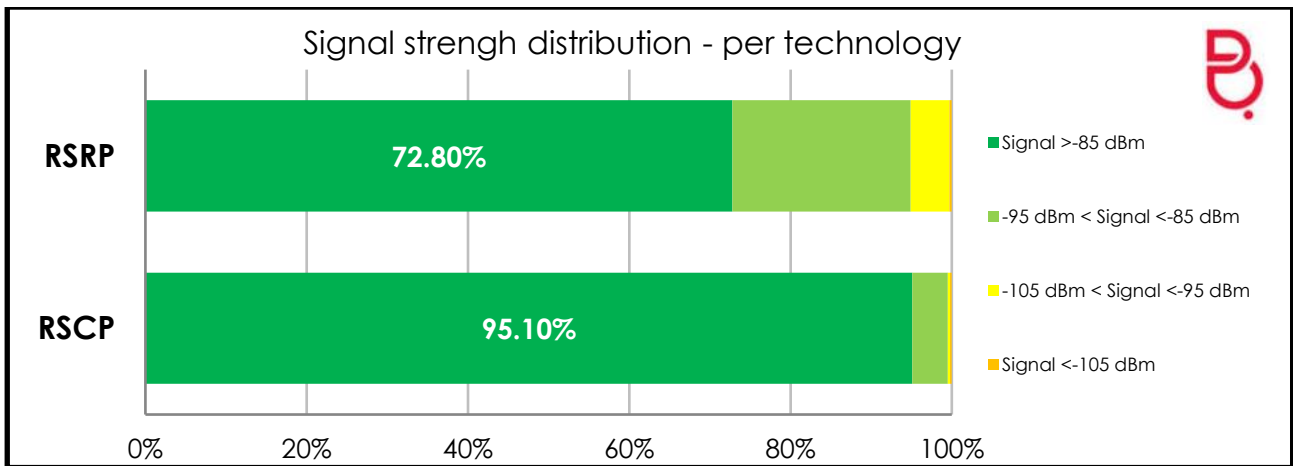
BATELCO		4G RSRP
Samples		8358
Signal >-85 dBm		72.8%
-95 dBm < Signal <-85 dBm		22.1%
-105 dBm < Signal <-95 dBm		4.8%
Signal <-105 dBm		0.3%

STC Bahrain - Signal strength distribution (IDLE mode):

STC		4G RSRP
Samples		8335
Signal >-85 dBm		75.8%
-95 dBm < Signal <-85 dBm		19.3%
-105 dBm < Signal <-95 dBm		4.6%
Signal <-105 dBm		0.3%

Zain - Signal strength distribution (IDLE mode):

ZAIN		4G RSRP
Samples		8280
Signal >-85 dBm		72.0%
-95 dBm < Signal <-85 dBm		16.8%
-105 dBm < Signal <-95 dBm		10.3%
Signal <-105 dBm		0.9%



End of document